

# Harrow's Early Support Children's Centres

## Early Support Timetable

Pre natal – 9 years – booked places only

# 06 June – 22 July 2022

For services for  
age 9 – 19 /  
25 years go to  
[@Wealdstone.youthhub](https://www.instagram.com/wealdstone.youthhub)  
on Instagram

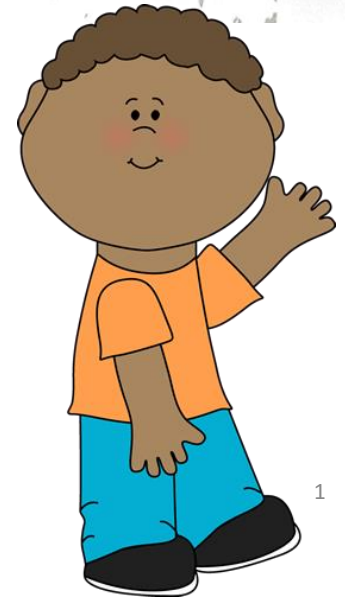
**Harrow Council**  
**Early Support**  
Small Steps – Lasting Change

We are saying BYE, BYE to bookings!!  
Early Support are relaunching drop in groups &  
sessions!

Check out the timetable to see what sessions  
you can drop in to!

You will still need to call & book in to some sessions so please do  
double check the timetable

Please note numbers are limited to keep us all  
safe!



# COVID GUIDELINES & GROUP INFO



In line with the Local Authority guidance we continue to have some Covid 19/ infection control measures in place which we request are adhered when visiting an ES sites

These include following the key measures Hands, Face, Fresh Air

Wearing a face covering when in close proximity to others or in contact with people you don't usually see

Hand washing/ sanitising when entering a site

Respect others wish to social distance

Wearing appropriate clothes for the weather as where possible windows and doors will be open and most of the activities will be outdoors

Bringing in a bottle of water for you and your child to drink (no food please!)

Bringing in a made up bottle of milk if your baby will need one (*always follow safe bottle guidance from NHS*)

Ensuring that you do not attend if you or a member of your household is unwell or has signs of Covid 19

## How drop ins work

Arrive at the site no more than 5 minutes before the start of the session

If you are not registered advise the admin so they can support you to get the forms filled out (you will not be able to sign in at this time)

You will need to wait outside in a line

2 – 5 minutes before the start of the session the admin will welcome you in to sign the register

On entry to a site you will need to hand sanitise

Group numbers will remain small – once numbers are met families will be turned away to ensure safety

There will be a small area for you to leave your personal belongings please only bring what you need  
The room will be set and outside area (where available) will be set up with a range of activities for you and your child to enjoy

External / internal (depending on the site) buggy areas are available  
(we encourage parents to bring a buggy lock)

Parents and carers are responsible for their child/ren at all times

No mobile phones

No hot drinks

Parents and carers are responsible for their family's belongings at all times

# Have tons of fun, play & learn together!!!!



## Please follow this guide in all of our groups and services.

Note; we have limited space for buggies and for health and safety reasons buggies can not be brought in to groups, where possible please leave your buggies at home. We recommend bringing a buggy lock with you to centres with outdoor buggy bays.

Please arrive only 10mins prior to the group start times. Doors will open at most sites 2 - 5mins prior to the start time for sign in



Mobile phones should be turned to silent or switched off during groups and handheld computers should be switched off. If you would like to take a picture or video of a special moment, ask a member of the team.



You remain responsible for your children at all times.



We provide water in all groups. (Due to allergies, we are unable to agree to families bringing their own food or snacks)



You are responsible for all personal belongings.



There is an expectation that everyone helps to tidy up.



Most importantly **PLAY, LEARN** and **HAVE FUN!**

# Getting ready for school and transitions

Is your child starting school in September?

Is your child starting a new childminder, pre school or nursery class?

This term & the summer holiday is important for your child..

Come along to our rising stars groups where staff can support you with your child's transition to school ...

Look out for the following groups on the timetable.....

TALK & Play

Learning Through Play

Imagine & Play

Stories Come Alive

PAFT

Health & well-being

Outdoor play groups

Workshops

Top tips and advice sessions

Some of the things you can do as a parent to help your child to feel ready for school.....

Come to groups and sessions to support your child's social skills, learning and development

Ask staff about the curriculum

Ensure your child has had a two year old health and development check (Call 020 8736 6222 or 020 8736 1066 to book)

Let staff know if you have any concerns about your child's development.

Attend toilet learning workshops or ask for tips about readiness to toilet learn

Encourage your child to practise feeding themselves, dressing themselves and to use their words, signs or other communication skills to share their wants & needs

Practise the walk to school

Make sure you are open & honest about your child's likes, wants & needs during school induction

Let staff know if you have questions or are worried about your child's speech and language



Rising Stars  
groups will  
support  
your child to  
'be ready'!

# Is your child starting school?

Is your child ready for school?  
Would you like support with your child's  
transition to school?



**How to ask for support?**  
Go to Facebook page:  
[www.facebook.com/harrowcc](https://www.facebook.com/harrowcc)  
Send an inbox Facebook message with your full name, contact number and e-mail address and a practitioner will be in touch to support you.



Virtual transition in to school support -  
11 July 2022 – PM – Call to book your place 020 8424 1460  
19 July 2022 – AM - Call to book your place 020 8424 1460

# Support, advice and guidance from...

## Early Support

Small Steps - Lasting Change

## Parenting is tough!

**We can all do with a little bit of advice and guidance at times**

The Early Support staff are trained in the most up to date evidence based approaches to support you as a parent or carer!

Staff are here to....

- listen
- to support you to make the best decision for your family
- to offer advice and support from a friendly professional
  - to reassure
- to support access to any services you may need or want and
  - to do what ever they can to offer support!

These topics will help with starting school

You can get support through any of the virtual sessions however you can also call 020 8736 6222 and ask to be put in contact with a member of the team

Ask about sleep routines

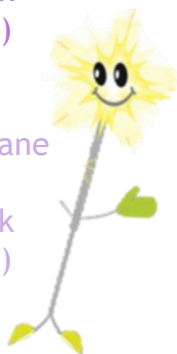
Ask about toilet learning

Ask about meal times or feeding

Ask about behaviour

## Behaviour Workshop

Stanmore Park Children's  
Centre, William Drive, HA7 4FZ  
Call 020 8736 6480 to book  
(Parents of 2 - 4 year olds)  
08 June 2022 - PM



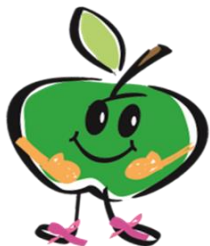
The Pinner Centre, Chapel Lane  
Car Park, HA5 1AA  
Call 020 8424 1460 to book  
(Parents of 2 - 4 year olds)  
27 June 2022 - PM

Virtual  
29 June 2022 - PM  
(focus on alternatives to physical  
chastisement)

The Pinner Centre, Chapel Lane  
Car Park, HA5 1AA  
Call 020 8424 1460 to book  
(Parents of 3 - 9 year olds)  
18 July 2022 - PM

## Healthy Eating & meal times Workshop

Stanmore Park Children's Centre, William  
Drive, HA7 4FZ  
Call 020 8736 6480 to book  
15 June 2022 - PM



## Oral Health Workshop

Chandos Children's Centre, Delivery Site,  
Chandos Crescent, HA8 6HL  
Call - 020 8736 6550  
23 June 2022 - PM

# Early Support Parenting Workshops

We all need advice sometimes....  
Appointment only



## Sleep Workop

The Pinner Centre, Chapel Lane  
Car Park, HA5 1AA  
Call 020 8424 1460 to book  
20 June 2022 - PM

Chandos Children's Centre,  
Delivery Site, Chandos Crescent,  
HA8 6HL  
Call - 020 8736 6550  
30 June 2022 - PM

Virtual  
Call 020 8424 1460 to book  
05 July 2022 - AM

## Toilet Learning Workshop

Chandos Children's Centre, Delivery Site,  
Chandos Crescent, HA8 6HL  
Call - 020 8736 6550  
16 June 2022 - PM



Virtual  
Call 020 8424 1460 to book  
21 June 2022 - AM

Stanmore Park Children's Centre, Delivery  
Site, William Drive, HA7 4FZ  
Call - 020 8736 6480  
06 July 2022 - PM





### Behaviour Workshop

Gange 10-11am  
22 June 2022  
(2-4 years)

Virtual 10-11am  
29 June 2022  
(5-9 years )

Book your place by  
calling 020 8427 0134

### Sleep Workop

Gange 1-2pm  
5 July 2022

Book your place by  
calling  
020 8427 0134

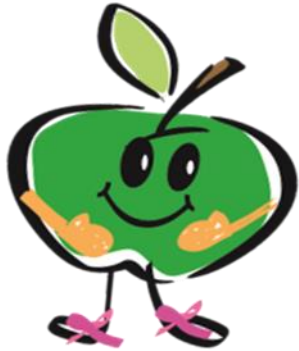


## Early Support

# Parenting Workshops

We all need advice sometimes....

Appointment only



### Family Meal times Workshop

Virtual 1-2pm  
28 June 2022

Book your place by calling  
020 8422 4692

### Toilet Learning Workshop

Virtual 10-11am  
14 July 2022

Book you place by calling  
020 8422 4692



# Sibling relationships

Support and advice around sibling rivalry

Routines

Boundaries & consistency

Parenting tips

Ideas on special play times



Being a parent of siblings can be tough, balancing your time, supporting their well-being, meeting their needs that often differ & questioning yourself about whether you are doing enough ... not to mention any challenges around sibling relationships! If you would like to talk things through or get some ideas give us a call & book on to our top tips session or our sibling relationships workshop



13 July 2022 – PM  
Stanmore Park, Children's Centre, HA7 4FZ  
Call 020 8736 6480 to book

# Educational and Child Psychologist 'drop-in'

Look out for  
the sessions  
on the  
timetable on  
Thursdays

0 - 5  
years

Come and have an informal consultation with one of us from the Educational Psychology Service. We can discuss how your child is developing, particularly during this Covid recovery period, and provide advice to help with your child's overall development.

We can give you guidance about:

- Play activities to promote social and emotional, language and communication, physical and early learning development.
  - Maintaining mental and emotional well-being.
- Understanding and supporting special educational needs.
  - Parental boundary setting.
  - Wake-up, bedtime and bathroom routines.
- Toileting and promoting independence and much more.

*We are looking forward to seeing you!*

Find out more at Harrow Children's Centres or Facebook

[www.facebook.com/harrowcc](http://www.facebook.com/harrowcc)

Or by calling 020 8736 6222 or 020 8422 4692



# Weaning parties

From 6 ½ months we would suggest you book and come along to a weaning party, to get recipe ideas, get reassurance about suitable foods and practice with some homecooked finger foods.



This baby is 6 ½ months, enjoying finger foods from the start

Baby's a little older here - you can see the progression in her hand skills



*Weaning workshops / parenting sessions* (for parents of babies from 5 months plus for advice around beginning weaning at 6 months)

Date & Time

Venue

14 June 2022  
2 – 3 pm

Cedars Children's Centre,  
Whittlesea road, HA3 6LS

Please ring 020 8736 6222  
to book a place for the  
weaning party

**Early Support**  
Small Steps - Lasting Change

# Weaning workshops

From 5 months we would suggest you join an online weaning workshop for top tips and advice on how to introduce solid foods with your baby!

To book a place on the workshop, please message the Facebook inbox

[www.facebook.com/harrowcc](https://www.facebook.com/harrowcc)

or email Early Support at [earlysupporthub@harrow.gov.uk](mailto:earlysupporthub@harrow.gov.uk)



**Early Support**

Small Steps - Lasting Change

*Weaning workshops / parenting sessions* (for parents of babies from 5 months plus for advice around beginning weaning at 6 months)

Date & Time

Venue

Tuesday 14 June 2022 -  
10- 11am

Remote group on Teams

# Saturday Weaning workshops and parties

From 5 ½ months we would suggest you book and come along to a weaning workshop for top tips and advice on how to wean your baby!



## Weaning Party

Between 6 – 9 months you can attend weaning parties at the Centre!

This is a great opportunity to get recipe ideas, get reassurance around suitable foods and practice weaning.

Please ring

020 8736 6222

to book a place for  
the weaning party

**Early Support**  
Small Steps – Lasting Change

### Saturday weaning party dates

Date & Time	Venue
2 July 2022 10 – 11am	Cedars Children's Centre, Whittlesea Road, HA3 6LS - 020 8736 6222

Strengthening Families, Strengthening Communities (SFSC) is an inclusive evidence-based parenting programme, designed to promote protective factors which are associated with good parenting and better outcomes for children

**strengthening  
families  
strengthening  
communities**

### By taking part in SFSC, you will:

- \* get to meet other parents
- \* share information and strategies for bringing up your children
- have the opportunity to make sure your voice is heard

SFSC is a group-based programme, and you will usually take part alongside 8—12 other parents. The programme will run by two facilitators who have undergone extensive training to ensure that everyone gets the most out of the programme

### How long is the course?

You are invited to attend a one off “get to know each other” session followed by a 12 week programme. Each session lasting 3 hours.

### What do I have to do?

Get involved!

As part of the programme you will explore and think about your own experiences, and about how your culture and family background have shaped your parenting style. Register with your local Early Support Hub to access the programme and a range of free services for you and your family.

### What will SFSC give me?

SFSC will help you to answer these important parenting questions:

How can I motivate my child to try their best at school?

How do I build a better relationship with my child?

How do I stop my teenager getting involved in drinking, drugs, antisocial behaviour or truanting?

How do I put boundaries in place with my child?

What youth and parent services are available in my community?



# Parents & carers.....

Do you feel that your child's behaviour is a challenge sometimes?

Do you feel that your children don't listen to you?

Do you lose control when you are managing your child's behaviour?

**You are invited to a bespoke workshop**



This group will support you in managing your child's behaviour using positive strategies and help you understand the impact of physical chastisement on your child.

To access this workshop and book a place, please call Cedars Children's centre on 020 8736 6222

Liz Eardley will contact you with the sign up details prior to the group starting

**Early Support**  
Small Steps - Lasting Change

Harrow  
Children's  
Centres

This session is for parents of children aged between 3 -10 years and will be delivered via MS Teams



Date: Wednesday  
29 June 2022

Time:  
1 pm - 2.30pm





**FREE - Oral  
Health  
support and  
advice on  
the phone**



**Top tips on  
when to  
start  
brushing**



**Top tips on  
when how  
to start  
brushing**



**Top tips on  
how to  
encourage  
brushing**

[www.facebook.com/harrowcc](http://www.facebook.com/harrowcc)

To arrange a telephone appointment send a Facebook inbox message including the following info

Oral health advice – your name, the age of your child & your contact number or call 020 8736 6222 and ask to talk to a member of the team about oral health



# Free Baby Feeding Support Groups in Harrow

## All welcome



Central and North West London **NHS**  
NHS Foundation Trust

**Monday 1 - 3pm**

Cedars Children's Centre, Whittlesea Road, Harrow Weald, HA3 6LS

**Wednesday 10am - 12pm**

Virtual Group

**Thursday 9am - 3.30pm**

Kenmore Park Children's Centre, Warneford Road, Kenton, HA3 9HZ

Book a space to get some support with feeding your baby or have a chat with other mothers. A Health Visitor and Lactation Consultant will be at each group.

To book a space at any of the groups please email Julie Peris on [j.peris@nhs.net](mailto:j.peris@nhs.net)



# Being Parents

(Adult only Course)

New 4 week course 10 June 2022 from 10-11.30am  
24 June  
1 July  
15 July

Gange Delivery Site, 68 Canning Road, Wealdstone HA3 76N

Come and join our wonderful workshops exploring how to create a family home that works for everyone.



For parents with babies and toddlers

- Week 1 : The world through our children's eyes
- Week 2: Relationships with yourself and others. Balancing everyone's needs
- Week 3: Child development and how we can support it.
- Week 4: Learning through play. Terrific 2s. How to embrace the challenges of toddlerhood.

**LEARN** :  
HARROW.....

To enquire about booking your place :  
[Call 020 8427 0134](tel:02084270134) – The Centre is open 9am – 4pm Monday – Friday

**Early Support**  
Small Steps - Lasting Change

2022

## Lets Play Together Group (birth- 4 years)

A 4 week programme that  
Offers parents the opportunity to:

- Learn positive behaviour strategies
- Learn more about child development
- Set boundaries and routines
- Play together
- Create positive meal times
- Manage screen time
- Read together



**Starting 21 June 10-11.30am**

Hillview  
2 Grange Road  
South Harrow  
HA20LW

**To find out more and express an interest  
please call  
020 8422 4692**

## 1:1 Appointment only advice sessions available

### Do you need some support, advice and guidance?

We can offer some top tips for:

Challenging behaviour  
Toilet learning  
Routines  
Weaning  
Sleep routines  
Sibling rivalry  
Home schooling

And many more

**FREE SUPPORT ADVICE & GUIDANCE**  
Appointments will be done either by Zoom video or a telephone call

When?

20 minute time slots available every

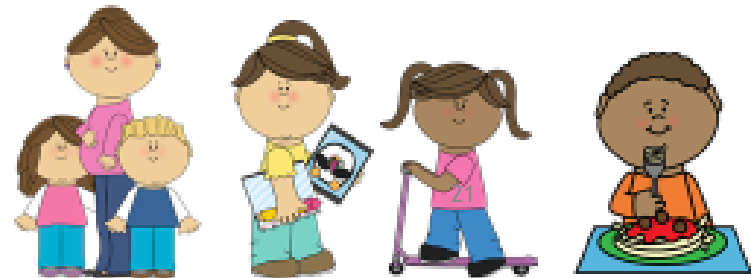
**Monday: 1 – 3pm**

**Wednesday: 9.30 – 11.30am**

**Thursday: 1-3pm**

**How to book a time slot?**

Send an inbox Facebook message with your full name, contact number and e-mail address, a practitioner will be in touch to book you in.



2022	Monday 06 June	Tuesday 07 June	Wednesday 08 June	Thursday 09 June	Friday 10 June
Cedars Whittlesea Road Harrow HA3 6LS 020 8736 6222 <b>Sessions are drop in            unless stated            otherwise</b>	<b>The team are busy            planning for the term</b>	9.30 – 10.30am <b>Find Your Voice            We Are Family Music Session            Call to register your interest</b>	10 – 11am <b>PAFT Baby Group - Birth – Crawlers            – drop in</b>	10 – 11am <b>TALK &amp; Play -18 months + -            drop in</b>	10.30 – 11.30am <b>Outdoor Play            ‘Little Adventurers’            drop in</b>
		1 – 2.30pm <b>Children’s Sensory Team Pre            School Group – Bookings only</b>	<b>Parenting top tips &amp; advice            Call to book your place</b>	Health	
		1 – 2.30pm <b>Sensory Play - drop in            Sensory room time</b>	<b>PM - Special Play Times            Booked places only</b>		
Stanmore Park William Drive Stanmore HA7 4FZ 020 8736 6480 <b>Sessions are drop in            unless stated            otherwise</b>		10 – 11.30am <b>Imagine &amp; Play – drop in</b>	10 – 11am <b>TALK &amp; Play -18 months + - drop in</b>	Health	10 – 11am <b>Baby Group            Womb to World            Pre natal – Crawlers            With Child safety advice –            drop in</b>
		1 – 2pm <b>Stories Come Alive – drop in</b>	<b>1.30 – 2.30pm            Behaviour workshop            Parents of children aged 2 – 4 years            Call to book your place</b>	<i>Parenting Programme</i>	
The Pinner Centre Chapel Lane Car Park Pinner HA5 1AA 020 8424 1460 <b>Sessions are drop in            unless stated            otherwise</b>		10 – 11am <b>TALK &amp; Play – drop in            18 months +</b>	10 – 11am <b>Learning Through Play - drop in</b>	10 – 11am <b>Stories Come Alive – drop in</b>	10 – 11am <b>Let's Get Physical – drop            in</b>
		1.30 – 2.30pm <b>PAFT Group Birth – 3 years –            drop in</b>	1.30 – 2.30pm <b>Imagine &amp; Play – drop in</b>		
Whitefriars Children’s Centre Whitefriars Avenue HA3 5RQ 020 8424 1066 <b>Sessions are drop in            unless stated            otherwise</b>		9.30 – 11.30am <b>Childminders' Group – Lead by            childminders</b>	10 – 11am <b>Health &amp; Well – being Stay &amp; Play –            drop in</b>		10 – 11am <b>TALK &amp; Play            18 months+ - drop in</b>
		1.30 – 2.30pm <b>Learning Through Play – drop            in</b>	<b>Afternoon            2 year checks            Call to book your place</b>		
Chandos Chandos Crescent HA8 6HL 020 8736 6550 <b>Sessions are drop in            unless stated            otherwise</b>		10 – 11am <b>Stories Come Alive – drop in            12 months +</b>	10 – 11am <b>Sensory Baby Group – drop in            Crawlers – 18 months</b>	10 – 11am <b>Imagine &amp; Play – drop in</b>	
		1 – 2pm <b>Health &amp; well-being stay &amp;            play – drop in</b>			

	Monday 6 June	Tuesday 7 June	Wednesday 8 June	Thursday 9 June	Friday 10 June
<b>Hillview</b> 2 Grange Road, South Harrow, HA2 OLW 020 8422 4691	10 - 11.30am <b>Portage Group</b> (Bookings)	<b>Team Planning day</b>	10-11 <b>Baby stay and play</b> ( birth –crawlers) Drop in	10 - 11am <b>Learning Through Play</b> (18months - 4 years) With Educational Psychologist Drop in	<b>Partner services</b>
			1 - 2 pm <b>Busy Feet</b> (2-4 years )  Drop in	1 - 2.30pm <b>Portage Appointments</b> (Bookings)	
<b>Kenmore Park</b> Warneford Road, Kenton, HA3 9HZ 020 8416 8400		9.15 - 11.15am <b>Healthy Child Clinic</b> (Appointments )	10-11am <b>Talk and play</b> (2- 4 years) bookings	<b>9- 3.30pm</b> <b>Breastfeeding peer support</b> (bookings)	9.15am - 3.30pm <b>Healthy Child Clinic</b> (bookings)
		1 - 4pm <b>Health Visiting</b> (Appointments)	1-2pm <b>Baby Stay &amp; Play</b> (Crawlers - 18months) Drop in	<b>Post Natal Support Group</b> <b>By Appointment</b>	1-2PM <b>Explore and learn outdoors</b> (0-4 years) Drop in
<b>Elmgrove</b> Kenmore Ave, Kenton, HA3 8LU 020 8907 4941			<b>Partner service</b>	10-11am <b>Fun with phonics</b> (2-4 years) Drop in	10-11am <b>Sensory Play</b> (birth-18 months) Drop in
			1-2pm <b>Baby stay and play</b> ( birth -crawlers) Drop in	1 -2pm <b>Explore and learn outdoors</b> (0-4yrs) Drop in	
<b>Gange</b> 68 Canning Road, Wealdstone, HA3 7SN 020 8427 0134	<b>Partner service</b>		10-11 am <b>Health and wellbeing</b> (birth-4 years) Drop in		<b>Partner service</b>
	<b>Partner service</b>		<b>Partner service</b>	1-3pm <b>Parenting Top Tips</b> <b>Call to book @ a place</b>	<b>Partner service</b>

2022	Monday 13 June	Tuesday 14 June	Wednesday 15 June	Thursday 16 June	Friday 17 June
Cedars Whittlesea Road Harrow HA3 6LS 020 8736 6222 <b>Sessions are drop in unless stated otherwise</b>	<b>The team are working with the local schools</b>	9.30 – 10.30am <b>Find Your Voice We Are Family Music Session</b> <b>Call to register your interest</b>	10 – 11am <b>PAFT Baby Group - Birth – Crawlers</b> – drop in	10 – 11am <b>TALK &amp; Play -18 months +</b> <b>With speech and language therapist - drop in</b>	10.30 – 11.30am <b>Outdoor Play ‘Little Adventurers’</b> – drop in
		1 – 2.30pm <b>Children’s Sensory Team Pre School Group – bookings only</b>	<b>Parenting top tips &amp; advice</b> <b>Call to book your place</b>	Health	
		12 – 2pm <b>Breastfeeding Peer Support</b>	1 – 2.30pm <b>Sensory Play – drop in</b> <b>Sensory room time</b>	<b>PM - Special Play Times – booked places only</b>	
Stanmore Park William Drive Stanmore HA7 4FZ 020 8736 6480 <b>Sessions are drop in unless stated otherwise</b>	10 – 11am <b>PAFT Group Birth – 3 years – drop in</b>	10 – 11.30am <b>Imagine &amp; Play – drop in</b>	10 – 11am <b>TALK &amp; Play -18 months + - drop in</b>	Health	10 – 11am <b>Womb to World Baby Group</b> <b>Pre natal – Crawlers</b> <b>With sleep advice drop in</b>
	1 – 2pm <b>Learning Through Play – drop in</b>	1 – 2pm <b>Stories Come Alive – drop in</b>	1.30 – 2.30pm <b>Healthy eating &amp; meal times workshop – call to book your place</b> <b>Parents only</b>	<i>Parenting Programme</i>	
The Pinner Centre Chapel Lane Car Park Pinner HA5 1AA 020 8424 1460 <b>Sessions are drop in unless stated otherwise</b>	<b>The team are working with the local schools</b>	10 – 11am <b>TALK &amp; Play – drop in</b> <b>18 months +</b>	10 – 11am <b>Learning Through Play - drop in</b>	10 – 11am <b>Stories Come Alive – drop in</b>	10 – 11am <b>Let's Get Physical – drop in</b>
		1.30 – 2.30pm <b>PAFT Group Birth – 3 years – drop in</b>	1.30 – 2.30pm <b>Imagine &amp; Play – drop in</b>	1.30 – 2.30pm <b>PAFT Baby Group – drop in</b> <b>Birth – Crawlers</b>	
Whitefriars Children’s Centre Whitefriars Avenue HA3 5RQ 020 8424 1066 <b>Sessions are drop in unless stated otherwise</b>	10 – 11am <b>PAFT Baby Group – drop in</b> <b>Crawlers – 18 months</b>	9.30 – 11.30am <b>Childminders' Group</b>	10 – 11am <b>Health &amp; Well – being Stay &amp; Play – drop in</b>		10 – 11am <b>TALK &amp; Play</b> <b>18 months + drop in</b>
	<b>TALK Focus</b> <b>Bookings only</b>	1.30 – 2.30pm <b>Learning Through Play – drop in</b>	1.30 – 2.30pm <b>Indoor &amp; Outdoor Play – drop in</b>		
Chandos Chandos Crescent HA8 6HL 020 8736 6550 <b>Sessions are drop in unless stated otherwise</b>	10 – 11am <b>TALK &amp; Play – drop in</b> <b>18 months +</b>	10 – 11am <b>Stories Come Alive – drop in</b> <b>12 months +</b>	10 – 11am <b>Sensory Baby Group – drop in</b> <b>Crawlers – 18 months</b>	10 – 11am <b>Imagine &amp; Play – drop in</b>	
	<b>Afternoon – face to face - 1:1 parenting advice session – please book your space</b>	1 – 2pm <b>TALK Focus – Booked places only</b>		1.30 – 2.30pm <b>Toilet Learning workshop</b> <b>Call to book your place</b>	



	Monday 13 June	Tuesday 14 June	Wednesday 15 June	Thursday 16 June	Friday 17 June
<b>Hillview</b> 2 Grange Road, South Harrow, HA2 OLW 020 8422 4692	10 - 11.30am <b>Portage Group</b> <i>(Bookings)</i>	Team training Day	Partner service	10 - 11am <b>Learning Through Play</b> (18months - 4 years) Drop in	10 - 11am <b>Talk and play</b> (18 months+) Bookings
	1 - 4pm <b>Health Visiting</b> <b>Appointments</b>		1 - 2 pm <b>Busy Feet</b> (2-4 years ) Drop in	1 - 2.30pm <b>Portage Appointments</b> <i>(Bookings)</i>	1-2pm <b>Stories come Alive</b> (0-4 years) Drop in
<b>Kenmore Park</b> Wareford Road, Kenton, HA3 9HZ 020 8416 8400	10 - 11am <b>Learning Through play</b> (0- 4 years) Drop in	9.15 - 11.15am <b>Healthy Child Clinic</b>	10-11am <b>Talk and play</b> (2- 4 years) booking	9- 3.30pm <b>Breastfeeding peer support</b> <b>(bookings)</b>	9.15am - 3.30pm <b>Healthy Child Clinic</b>
	1-2pm <b>Stories come Alive</b> (0-4 years) Drop in	1 - 4pm <b>Health Visiting</b> <b>Appointments</b>	1-2 pm <b>Baby stay and play</b> ( crawlers - 18 months) Drop in	<b>Post Natal Support Group</b> <b>By Appointment</b>	1-2PM <b>Explore and learn</b> <b>outdoors</b> (0-4 years) Drop in
<b>Elmgrove</b> Kenmore Ave, Kenton, HA3 8LU 020 8907 4941		<b>DV Community Group</b>	10-11am <b>Stories Come Alive</b> (birth-4 years) drop in	10-11am <b>Fun with Phonics</b> (2-4yrs) Drop in	10-11am <b>Sensory Play</b> (birth-18 months) Drop in
			1-2pm <b>Baby stay and play</b> ( birth -crawlers) Drop in	1 -2pm <b>Explore and learn</b> <b>outdoors (0-4yrs)</b> Drop in	
<b>Gange</b> 68 Canning Road, Wealdstone, HA3 7SN 020 8427 0134	Partner service		10-11 am <b>Health and wellbeing</b> (0-4 years) Drop in	10-11am <b>Explore and learn outdoors</b> (birth-4 years) Drop in	Partner service
	1.30 - 2.30pm <b>Sensory baby</b> (birth- crawlers) Drop in			1-3pm <b>Parenting Top Tips</b> Call to book a place	Partner service

2022	Monday 20 June	Tuesday 21 June	Wednesday 22 June	Thursday 23 June	Friday 24 June
<p>Cedars Whittlesea Road Harrow HA3 6LS 020 8736 6222 <b>Sessions are drop in unless stated otherwise</b></p>	<p><b>The team are working with the local schools</b></p>	<p>9.30 – 10.30am <b>Find Your Voice</b> <b>We Are Family Music Session</b> <b>Call to register your interest</b></p>	<p><b>PM – Weaning Party for parents of babies 6.5months plus – Call to book your place</b></p>	<p>10 – 11am <b>TALK &amp; Play -18 months +</b> <b>With educational psychologists – drop in</b></p>	<p>10.30 – 11.30am <b>Outdoor Play</b> <b>‘Little Adventurers’</b> <b>Drop in</b></p>
		<p>1 – 2.30pm <b>Children’s Sensory Team Pre School Group – bookings only</b></p>		<p>Health</p>	
	<p>12 – 2pm <b>Breastfeeding Peer Support</b></p>	<p>1 – 2.30pm <b>Sensory Play – drop in</b> <b>Sensory room time</b></p>		<p><b>PM - Special Play Times–booked places</b></p>	
<p>Stanmore Park William Drive Stanmore HA7 4FZ 020 8736 6480 <b>Sessions are drop in unless stated otherwise</b></p>	<p>10 – 11am <b>PAFT Group Birth – 3 years – drop in</b></p>	<p>10 – 11.30am <b>Imagine &amp; Play – drop in</b></p>	<p>10 – 11am <b>TALK &amp; Play -18 months + - drop in</b></p>	<p>Health</p>	<p>10 – 11am <b>Womb to World Baby Group</b> <b>Pre natal – Crawlers</b> <b>With feeding advice – drop in</b></p>
	<p>1 – 2pm <b>Learning Through Play – drop in</b></p>	<p>1 – 2pm <b>Stories Come Alive – drop in</b></p>		<p><i>Parenting Programme</i></p>	
<p>The Pinner Centre Chapel Lane Car Park Pinner HA5 1AA 020 8424 1460 <b>Sessions are drop in unless stated otherwise</b></p>	<p>10 – 11am <b>Walk &amp; Talk in the Park – drop in</b> <b>Pinner Memorial Park</b></p>	<p>10 – 11am <b>TALK &amp; Play – drop in</b> <b>18 months +</b></p>	<p>10 – 11am <b>Learning Through Play – drop in</b></p>	<p>10 – 11am <b>Stories Come Alive</b></p>	<p>10 – 11am <b>Let's Get Physical – drop in</b></p>
	<p>PM <b>Sleep workshop</b> <b>Call to book your place</b></p>	<p>10.30 – 11.30am <b>Virtual Toilet Learning Workshop</b> <b>call to book</b></p>	<p>1.30 – 2.30pm <b>Imagine &amp; Play – drop in</b></p>	<p>1.30 – 2.30pm <b>PAFT Baby Group – drop in</b> <b>Birth – Crawlers</b></p>	
		<p>1.30 – 2.30pm <b>PAFT Group Birth – 3 years – drop in</b></p>			
<p>Whitefriars Children’s Centre Whitefriars Avenue HA3 5RQ 020 8424 1066 <b>Sessions are drop in unless stated otherwise</b></p>	<p>10 – 11am <b>PAFT Baby Group – drop in</b> <b>Crawlers – 18 months</b></p>	<p>9.30 – 11.30am <b>Childminders' Group</b></p>	<p>10 – 11am <b>Health &amp; Well – being Stay &amp; Play – drop in</b></p>		<p>10 – 11am <b>TALK &amp; Play – drop in</b> <b>18 months +</b></p>
	<p>1.30 – 2.30pm <b>Stories Come Alive – drop in</b></p>	<p>1.30 – 2.30pm <b>Learning Through Play – drop in</b></p>	<p><b>2 year old health &amp; development checks</b> <b>Call to book</b></p>	<p>1.30 – 2.30pm <b>Indoor &amp; Outdoor Play – drop in</b></p>	
<p>Chandos Chandos Crescent HA8 6HL 020 8736 6550 <b>Sessions are drop in unless stated otherwise</b></p>	<p>10 – 11am <b>TALK &amp; Play – drop in</b> <b>18 months +</b></p>	<p>10 – 11am <b>Stories Come Alive – drop in</b> <b>12 months +</b></p>	<p>10 – 11am <b>Sensory Baby Group – drop in</b> <b>Crawlers – 18 months</b></p>	<p>10 – 11am <b>Imagine &amp; Play – drop in</b></p>	
	<p><b>Afternoon – face to face - 1:1 parenting advice session – please book your space</b></p>	<p>PM <b>Talk Focus</b> <b>Booked places</b></p>		<p>1.30 – 2.30pm <b>Oral Health workshop</b> <b>Call to book a place</b></p>	

	Monday 20th June	Tuesday 21 <sup>st</sup> June	Wednesday 22 <sup>nd</sup> June	Thursday 23 <sup>rd</sup> June	Friday 24 <sup>th</sup> June
<b>Hillview</b> 2 Grange Road, South Harrow, HA2 OLW 020 8422 4692	<b>10 - 11.30am</b> <b>Portage Group</b> <b>(Bookings)</b>	10-11.15am <b>Lets play together</b> (birth-4 years) By invite only	10-11am <b>Baby stay and play</b> (birth – crawlers) Drop in	10 - 11am <b>Learning Through Play</b> (18months - 4 years) Drop in	10-11am <b>Talk and play</b> (18 months+) Bookings
	<b>1 - 4pm</b> <b>Health Visiting</b> <b>Appointments</b>	1-2 pm <b>Fun with Phonics</b> (2-4 years) Drop in	1 - 2 pm <b>Busy Feet</b> (2-4 years ) Drop in	1 - 2.30pm <b>Portage Appointments</b> <i>(Bookings)</i>	1-2pm <b>Stories come Alive</b> (birth-4 years) Drop in
<b>Kenmore Park</b> Warneford Road, Kenton, HA3 9HZ 020 8416 8400	10 – 11am <b>Learning Through play</b> (0– 4 years) Drop in	9.15 - 11.15am <b>Healthy Child Clinic</b>	10-11am <b>Talk and play</b> (2-4 years) bookings	<b>9- 3.30pm</b> <b>Breastfeeding peer support</b> <b>(bookings)</b>	9.15am - 3.30pm <b>Healthy Child Clinic</b>
	1-2pm <b>Stories come Alive</b> (0-4 years) Drop in	1 - 4pm <b>Health clinic</b> <b>Appointments</b>	1-2 pm <b>Baby stay and play</b> ( crawlers - 18 months) Drop in	<b>Post Natal Support Group</b> <b>By Appointment</b>	1-2PM <b>Explore and learn</b> <b>outdoors</b> (0-4 years) Drop in
<b>Elmgrove</b> Kenmore Ave, Kenton, HA3 8LU 020 8907 4941		<b>DV Community Group</b>	10-11am <b>Stories Come Alive</b> (birth-4 years) Drop in	10-11.00am <b>Fun with Phonics</b> (2-4yrs) Drop in	10-11am <b>Sensory Play</b> (crawlers -18 months) Drop in
			1-2pm <b>Baby stay and play</b> ( birth -crawlers) Drop in	1 -2pm <b>Explore and learn</b> <b>outdoors</b> (0-4yrs) Drop in	
<b>Gange</b> 68 Canning Road, Wealdstone, HA3 7SN 020 8427 0134	<b>Partner services</b>	10-11.15am <b>Little cooks</b> (2-4 years) bookings	10-11 am <b>Behaviour Workshop</b> (2-4 years) bookings	10-11am <b>Explore and learn</b> <b>outdoors</b> (birth-4 years) Drop in	<b>10-11.30am</b> <b>Learn Harrow</b> <b>Being parents</b>
	1.30 - 2.30pm <b>Sensory baby</b> (birth- crawlers) Drop in		Partner service	1-3 pm <b>Parenting Top Tips</b> <b>Call to book a place</b>	<b>Partner services</b>

2022	Monday 27 June	Tuesday 28 June	Wednesday 29 June	Thursday 30 June	Friday 01 July
<p>Cedars Whittlesea Road Harrow HA3 6LS 020 8736 6222 <b>Sessions are drop in unless stated otherwise</b></p>	<p><b>The team are working with the local schools</b></p>	<p>9.30 – 10.30am <b>Find Your Voice</b> <b>We Are Family Music Session</b> <b>Call to register your interest</b></p>	<p>10 – 11am <b>PAFT Baby Group - Birth – Crawlers</b> drop in</p>	<p>10 – 11am <b>TALK &amp; Play -18 months +</b> - drop in</p>	<p>10.30 – 11.30am <b>Outdoor Play</b> <b>'Little Adventurers'</b> - drop in</p>
		<p>1 – 2.30pm <b>Children's Sensory Team Pre School Group – booked places</b></p>	<p><b>Parenting top tips &amp; advice</b> Call to book</p>	<p>Health</p>	
		<p>12 – 2pm <b>Breastfeeding Peer Support</b></p>	<p>1 – 2.30pm <b>Sensory Play – drop in</b> Sensory room time</p>	<p><b>PM - Special Play Times– booked places only</b></p>	
<p>Stanmore Park William Drive Stanmore HA7 4FZ 020 8736 6480 <b>Sessions are drop in unless stated otherwise</b></p>	<p>10 – 11am <b>PAFT Group Birth – 3 years – drop in</b></p>	<p>10 – 11.30am <b>Imagine &amp; Play – drop in</b></p>	<p>10 – 11am <b>TALK &amp; Play -18 months +</b> drop in</p>	<p>Health</p>	<p>10 – 11am <b>Baby Group</b> <b>Womb to World Pre natal – Crawlers</b> - drop in</p>
	<p>1 – 2pm <b>Learning Through Play – drop in</b></p>	<p>1 – 2pm <b>Stories Come Alive – drop in</b></p>	<p>PM <b>Supporting your child's emotions workshop – Call to book</b></p>	<p><i>Parenting Programme</i></p>	
<p>The Pinner Centre Chapel Lane Car Park Pinner HA5 1AA 020 8424 1460 <b>Sessions are drop in unless stated otherwise</b></p>	<p>10 – 11am <b>Walk &amp; Talk in the Park – drop in</b> Pinner Memorial Park</p>	<p>10 – 11am <b>TALK &amp; Play – drop in</b> 18 months +</p>	<p>10 – 11am <b>Learning Through Play - drop in</b></p>	<p>10 – 11am <b>Stories Come Alive - drop in</b></p>	<p>10 – 11am <b>Let's Get Physical</b> - drop in</p>
	<p>PM <b>Behaviour 2 – 4 years workshop</b> Call to book your place</p>	<p>1.30 – 2.30pm <b>PAFT Group Birth – 3 years – drop in</b></p>	<p>1 – 2pm <b>Imagine &amp; Play - drop in</b></p>	<p>1.30 – 2.30pm <b>PAFT Baby Group - drop in</b> Birth – Crawlers</p>	
			<p><b>Virtual - Behaviour workshop</b> <b>Alternatives to physical chastisement</b> - to book call 020 8736 6222</p>		
<p>Whitefriars Children's Centre Whitefriars Avenue HA3 5RQ 020 8424 1066 <b>Sessions are drop in unless stated otherwise</b></p>	<p>10 – 11am <b>PAFT Baby Group – drop in</b> Crawlers – 18 months</p>	<p>9.30 – 11.30am <b>Childminders' Group</b></p>	<p>10 – 11am <b>Health &amp; Well – being Stay &amp; Play - drop in</b></p>		<p>10 – 11am <b>TALK &amp; Play</b> 18 months + - drop in</p>
	<p>1.30 – 2.30pm <b>Stories Come Alive – drop in</b></p>	<p>1.30 – 2.30pm <b>Learning Through Play – drop in</b></p>		<p>1.30 – 2.30pm <b>Indoor &amp; Outdoor Play - drop in</b></p>	
<p>Chandos Chandos Crescent HA8 6HL 020 8736 6550 <b>Sessions are drop in unless stated otherwise</b></p>	<p>10 – 11am <b>TALK &amp; Play – drop in</b> 18 months +</p>	<p>10 – 11am <b>Stories Come Alive – drop in</b> 12 months +</p>	<p>10 – 11am <b>Sensory Baby Group - drop in</b> Crawlers – 18 months</p>	<p>10 – 11am <b>Imagine &amp; Play- drop in</b></p>	
	<p><b>The team are working with the local schools</b></p>	<p>PM <b>Talk Focus</b> Booked places only</p>		<p>1 – 2pm <b>Sleep workshop</b> Call to book</p>	

	Monday 27 <sup>th</sup> June	Tuesday 28 <sup>th</sup> June	Wednesday 29 <sup>th</sup> June	Thursday 30 <sup>th</sup> June	Friday 1 <sup>st</sup> July
<b>Hillview</b> 2 Grange Road, South Harrow, HA2 0LW 020 8422 4692	10 - 11.30am <b>Portage Group</b> <i>(Bookings)</i>	10-11.15am <b>Lets play together</b> (birth- 4 years) By invite only Bookings	10-11am <b>Baby stay and play</b> ( birth -crawlers) Drop in	10 - 11am <b>Learning Through Play</b> (18months - 4 years) <b>With oral health advice</b> Drop in	10-11am <b>Talk and play</b> (18 months+) bookings
	1-4 pm <b>Health Visitor</b> <b>Appointments</b>	1-2PM <b>Fun with Phonics</b> (2-4 Years) Drop in	1-2pm <b>Busy Feet</b> (2-4 years) Drop in	1 - 2.30pm <b>Portage Appointments</b> <i>(Bookings)</i>	
<b>Kenmore Park</b> Warneford Road, Kenton, HA3 9HZ 020 8416 8400	10 - 11am <b>Learning Through play</b> (18months - 4 years) Drop in	9.15 - 11.15am <b>Healthy Child Clinic</b>	10-11am <b>Talk and play</b> (2-4 years) bookings	9- 3.30pm <b>Breastfeeding peer support</b> <b>(bookings)</b>	9.15am - 3.30pm <b>Healthy Child Clinic</b>
	1-2pm <b>Stories come Alive</b> (birth-4 years) Drop in	1 - 4pm <b>Health Visiting</b> <b>Appointments</b>	1-2 pm <b>Baby stay and play</b> ( crawlers - 18 months) Drop in	<b>Post Natal Support Group</b> <b>By Appointment</b>	1-2PM <b>Explore and learn outdoors</b> (birth-4years) Drop in
<b>Elmgrove</b> Kenmore Ave, Kenton, HA3 8LU 020 8907 4941		<b>DV Community Group</b>	10-11am <b>Stories Come Alive</b> (birth-4 years) Drop in	<b>Own My Life</b>	10-11am <b>Sensory Play</b> (crawlers -18 months)
			1-2pm <b>Baby stay and play</b> ( birth -crawlers) Drop in	1-2pm <b>Explore and learn outdoors</b> (birth-4 years) Drop in	
<b>Gange</b> 68 Canning Road, Wealdstone, HA3 7SN 020 8427 0134	Partner services	10-11.15am <b>Little cooks</b> (2-4 years) Bookings	Partner services	10-11am <b>Explore and learn outdoors</b> (birth-4 years) Drop in	10-11.30 <b>Learn Harrow Being Parents</b> <b>Bookings</b>
	1.30 - 2.30pm <b>Sensory baby</b> (birth- crawlers) Drop in		Partner services	1-3 pm <b>Parenting Top Tips</b> Call to book a place	Partner services

2022	Monday 04 July	Tuesday 05 July	Wednesday 06 July	Thursday 07 July	Friday 08 July
<p>Cedars Whittlesea Road Harrow HA3 6LS 020 8736 6222 <b>Sessions are drop in unless stated otherwise</b></p>	<p><b>The team are working with the local schools</b></p>	<p>9.30 – 10.30am <b>Find Your Voice</b> <b>We Are Family Music Session</b> <b>Call to register your interest</b></p>	<p>10 – 11am <b>PAFT Baby Group - Birth – Crawlers - drop in</b></p>	<p>10 – 11am <b>TALK &amp; Play - 18 months + - drop in</b></p>	<p>10.30 – 11.30am <b>Outdoor Play</b> <b>'Little Adventurers' - drop in</b></p>
	<p><b>Co-parenting workshop</b> <b>Call to find out more – booking only</b></p>	<p>1 – 2.30pm <b>Children’s Sensory Team Pre School Group – booked places</b></p>	<p><b>Parenting top tips &amp; advice</b> <b>Call to book</b></p>	<p>Health</p>	
	<p>12 – 2pm <b>Breastfeeding Peer Support</b></p>	<p>1 – 2.30pm <b>Sensory Play - drop in</b></p>	<p><b>PM - Special Play Times – booked places only</b></p>	<p>1.30 – 2.30pm <b>Learning Through Play - drop in</b></p>	
<p>Stanmore Park William Drive Stanmore HA7 4FZ 020 8736 6480 <b>Sessions are drop in unless stated otherwise</b></p>	<p>10 – 11am <b>PAFT Group Birth – 3 years - drop in</b></p>	<p>10 – 11.30am <b>Imagine &amp; Play - drop in</b></p>	<p>10 – 11am <b>TALK &amp; Play -18 months + - drop in</b></p>	<p>Health</p>	<p>10 – 11am <b>Baby Group</b> <b>Womb to World Pre natal – Crawlers</b> <b>Attachment &amp; bonding advice - drop in</b></p>
	<p>1 – 2pm <b>Learning Through Play - drop in</b></p>	<p>1 – 2pm <b>Stories Come Alive - drop in</b></p>	<p>PM <b>Toilet Learning workshop</b> <b>Call to book your place</b></p>	<p><i>Parenting Programme</i></p>	
<p>The Pinner Centre Chapel Lane Car Park Pinner HA5 1AA 020 8424 1460 <b>Sessions are drop in unless stated otherwise</b></p>	<p>10 – 11am <b>Walk &amp; Talk in the Park - drop in</b> <b>Pinner Memorial Park</b></p>	<p>10 – 11am <b>TALK &amp; Play - drop in</b> <b>18 months +</b></p>	<p>10 – 11am <b>Learning Through Play - drop in</b></p>	<p>10 – 11am <b>Stories Come Alive - drop in</b></p>	<p>10 – 11am <b>Let's Get Physical - drop in</b></p>
	<p>PM <b>Parenting top tips and advice</b> <b>Call to book a place</b></p>	<p>10.30 – 11.30am <b>Virtual Sleep Workshop – call to book</b></p>	<p>1 – 2pm <b>Imagine &amp; Play - drop in</b></p>	<p>1.30 – 2.30pm <b>PAFT Baby Group - drop in</b> <b>Birth – Crawlers</b></p>	
		<p>1.30 – 2.30pm <b>PAFT Group Birth – 3 years - drop in</b></p>			
<p>Whitefriars Children’s Centre Whitefriars Avenue HA3 5RQ 020 8424 1066 <b>Sessions are drop in unless stated otherwise</b></p>	<p>10 – 11am <b>PAFT Baby Group- drop in</b> <b>Crawlers – 18 months</b></p>	<p>9.30 – 11.30am <b>Childminders' Group</b></p>			<p>10 – 11am <b>TALK &amp; Play</b> <b>18 months + - drop in</b></p>
	<p>1.30 – 2.30pm <b>Stories Come Alive - drop in</b></p>	<p>1.30 – 2.30pm <b>Learning Through Play- drop in</b></p>		<p>1.30 – 2.30pm <b>Indoor &amp; Outdoor Play - drop in</b></p>	
<p>Chandos Chandos Crescent HA8 6HL 020 8736 6550 <b>Sessions are drop in unless stated otherwise</b></p>	<p>10 – 11am <b>TALK &amp; Play - drop in</b> <b>18 months +</b></p>	<p>10 – 11am <b>Stories Come Alive - drop in</b> <b>12 months +</b></p>	<p>10 – 11am <b>Sensory Baby Group - drop in</b> <b>Crawlers – 18 months</b></p>	<p>10 – 11am <b>Imagine &amp; Play - drop in</b></p>	
	<p><b>Afternoon – face to face - 1:1 parenting advice session – please book your space</b></p>	<p>PM <b>Talk Focus</b> <b>Booked places</b></p>			

	Monday 4 July	Tuesday 5 July	Wednesday 6 July	Thursday 7 July	Friday 8 July
<b>Hillview</b> 2 Grange Road, South Harrow, HA2 OLW 020 8422 4692	10 - 11.30am <b>Portage Group</b> <i>(Bookings)</i>	10-11.15am <b>Lets play together</b> (Birth-4 years ) by invite only Bookings	10- 11am <b>Baby stay and play</b> (Birth – crawlers) Drop in	10 - 11am <b>Learning Through Play</b> (18months - 4 years) With Educational Psychologist Drop in	10 - 11am <b>Talk and play</b> (18 months +) Bookings
	1-4 pm <b>Health Visitor</b> <b>Appointments</b>	1-2pm <b>Fun with Phonics</b> (2-4 years) Drop in	1 - 2pm <b>Busy Feet</b> Drop in	1 - 2.30pm <b>Portage Appointments</b> <i>(Bookings)</i>	
<b>Kenmore Park</b> Warneford Road, Kenton, HA3 9HZ 020 8416 8400	10 - 11am <b>Learning Through play</b> (18months - 4 years) Drop in	9.15 - 11.15am <b>Healthy Child Clinic</b>	10-11am <b>Talk and play</b> (birth-4 years) Bookings	9- 3.30pm <b>Breastfeeding peer support</b> (bookings)	9.15am - 3.30pm <b>Healthy Child Clinic</b>
	1-2pm <b>Stories come Alive</b> (birth -4 years) Drop in	1 - 4pm <b>Health Visiting</b> <b>Appointments</b>	1 - 2pm <b>Baby Stay &amp; Play</b> (Birth - 18months) Drop in	<b>Post Natal Support Group</b> <b>By Appointment</b>	1-2pm <b>Explore and learn</b> <b>outdoors</b> (birth-4years)
<b>Elmgrove</b> Kenmore Ave, Kenton, HA3 8LU 020 8907 4941		<b>DV Community Group</b>	10-11am <b>Stories Come Alive</b> (0-4 years) Drop in	10-11am <b>Fun with Phonics</b> (2-4yrs) Drop in	10-11am <b>Sensory Play</b> (birth-18 months)
			1-2pm <b>Baby stay and play</b> ( birth -crawlers) Drop in	Partner service	
<b>Gange</b> 68 Canning Road, Wealdstone, HA3 7SN 020 8427 0134	Partner service	10-11.15am <b>Little cooks</b> (2-4 years ) Bookings	10-11am <b>Health and Wellbeing</b> (birth-4 years) Drop in	10-11am <b>Explore and learn</b> <b>outdoors</b> (birth-4 years) Drop in	Partner service
	Partner service	1-2pm <b>Sleep workshop</b> bookings		1-3pm <b>Parenting Top Tips</b> <b>Call to book a place</b>	Partner service

2022	Monday 11 July	Tuesday 12 July	Wednesday 13 July	Thursday 14 July	Friday 15 July
Cedars Whittlesea Road Harrow HA3 6LS 020 8736 6222 <b>Sessions are drop in unless stated otherwise</b>	<b>The team are working with the local schools</b>	9.30 – 10.30am <b>Find Your Voice</b> <b>We Are Family Music Session</b> <b>Call to register your interest</b>	<b>Staff Training developing SEND skills and knowledge - AM</b>	10 – 11am <b>TALK &amp; Play -18 months +</b> <b>- drop in</b>	10.30 – 11.30am <b>Outdoor Play</b> <b>'Little Adventurers'</b> <b>- drop in</b>
	<b>Afternoon</b> <b>2 year old health &amp; development checks</b> <b>Call to book</b>	1 – 2.30pm <b>Children's Sensory Team Pre School Group – booked places</b>		Health	
	12 – 2pm <b>Breastfeeding Peer Support</b>	1 – 2.30pm <b>Sensory Play - drop in</b>	<b>PM - Special Play Times – booked places</b>	<b>Staff Team meeting - PM</b>	
Stanmore Park William Drive Stanmore HA7 4FZ 020 8736 6480 <b>Sessions are drop in unless stated otherwise</b>	10 – 11am <b>PAFT Group Birth – 3 years - drop in</b>	10 – 11.30am <b>Imagine &amp; Play - drop in</b>	PM <b>Sibling Relationships workshop</b> <b>(Including sibling rivalry)</b> <b>Call to book a place</b>	Health	10 – 11am <b>Baby Group</b> <b>Womb to World Pre natal – Crawlers</b> <b>Be Healthy</b> <b>- drop in</b>
	1 – 2pm <b>Learning Through Play - drop in</b>	1 – 2pm <b>Stories Come Alive - drop in</b>		<i>Parenting Programme</i>	
The Pinner Centre Chapel Lane Car Park Pinner HA5 1AA 020 8424 1460 <b>Sessions are drop in unless stated otherwise</b>	10 – 11am <b>Walk &amp; Talk in the Park - drop in</b> <b>Pinner Memorial Park</b>	<b>The team are working with the local schools</b>		10 – 11am <b>Stories Come Alive - drop in</b>	10 – 11am <b>Let's Get Physical</b> <b>- drop in</b>
	PM <b>Starting School advice workshop</b> <b>Call to book your place</b>	1.30 – 2.30pm <b>PAFT Group Birth – 3 years - drop in</b>	1 – 2pm <b>Imagine &amp; Play - drop in</b>		
Whitefriars Children's Centre Whitefriars Avenue HA3 5RQ 020 8424 1066 <b>Sessions are drop in unless stated otherwise</b>	10 – 11am <b>PAFT Baby Group - drop in</b> <b>Crawlers – 18 months</b>	9.30 – 11.30am <b>Childminders' Group</b>			10 – 11am <b>TALK &amp; Play</b> <b>18 months +</b> <b>- drop in</b>
	1.30 – 2.30pm <b>Stories Come Alive - drop in</b>	1.30 – 2.30pm <b>Learning Through Play - drop in</b>	<b>PM – 2 year old health &amp; development checks</b> <b>Call to book</b>		
Chandos Chandos Crescent HA8 6HL 020 8736 6550 <b>Sessions are drop in unless stated otherwise</b>	10 – 11am <b>TALK &amp; Play - drop in</b> <b>18 months +</b>	10 – 11am <b>Stories Come Alive - drop in</b> <b>12 months +</b>		10 – 11am <b>Imagine &amp; Play- drop in</b>	
		1 – 2pm <b>TALK Focus</b> <b>Booked places</b>			



	Monday 11 July	Tuesday 12 July	Wednesday 13 July	Thursday 14 July	Friday 15 July
<b>Hillview</b> 2 Grange Road, South Harrow, HA2 0LW 020 8422 4692	10 - 11.30am <b>Portage Group</b> (Bookings)	10-11.15am <b>Lets play together</b> (birth -4 years ) By invite only bookings	10- 11am <b>Baby stay and play</b> (Birth – crawlers) Drop in	10 - 11am <b>Learning Through Play</b> (18months - 4 years) Drop in	10 - 11am <b>Talk and play</b> (18 months +) Bookings
	1-4 <b>Health Visitor</b> <b>Appointments</b>	1-2pm <b>Fun with Phonics</b> (2-4 years) Drop in			1 - 2.30pm <b>Portage Appointments</b> <i>(Bookings)</i>
<b>Kenmore Park</b> Warneford Road, Kenton, HA3 9HZ 020 8416 8400	10 - 11am <b>Learning Through play</b> (birth- 4 years) Drop in	9.15 - 11.15am <b>Healthy Child Clinic</b>	10-11am <b>Talk and play</b> (2-4 years) bookings	9- 3.30pm <b>Breastfeeding peer support</b> (bookings)	9.15am - 3.30pm <b>Healthy Child Clinic</b>
	1-2pm <b>Stories come Alive</b> (birth-4 years) Drop in	1 - 4pm <b>Health Visiting</b> <b>Appointments</b>			<b>Post Natal Support Group</b> <b>By Appointment</b>
<b>Elmgrove</b> Kenmore Ave, Kenton, HA3 8LU 020 8907 4941		DV Community Group	10-11am <b>Stories Come Alive</b> (birth-4 years) Drop in	10-11am <b>Fun with Phonics</b> (2-4 years) Drop in	10-11am <b>Sensory Play</b> (birth-18 months) Drop in
				<b>Partner service</b>	
<b>Gange</b> 68 Canning Road, Wealdstone, HA3 7SN 020 8427 0134	<b>Partner service</b>	10-11am <b>Little cooks</b> ( 2-4 years) bookings	10-11am <b>Health and Wellbeing</b> (birth-4 years) Drop in	10-11am <b>Explore and learn outdoors</b> (birth-4 years) Drop in	10-11.30am <b>Learn Harrow Being Parents</b> (Bookings)
	1.30 - 2.30pm <b>Sensory Baby</b> (birth - crawlers) Drop in		1-2pm <b>Harrow Library service</b>  Drop in	1-3 pm <b>Parenting Top Tips</b> <b>Call to book a place</b>	<b>Partner service</b>

2022	Monday 18 July	Tuesday 19 July	Wednesday 20 July	Thursday 21 July	Friday 22 July
Cedars Whittlesea Road Harrow HA3 6LS 020 8736 6222 <b>Sessions are drop in unless stated otherwise</b>		9.30 – 10.30am <b>Find Your Voice</b> <b>We Are Family Music Session</b> <b>Call to register your interest</b>	<i>Team Training Day</i>	<i>The team are busy planning for the summer holidays</i>	<i>The team are preparing for the summer holidays</i>
	<b>Afternoon</b> 2 year checks	1 – 2.30pm <b>Children’s Sensory Team Pre School Group – booked places</b>	Health	Health	
	12 – 2pm <b>Breastfeeding Peer Support</b>	1 – 2.30pm <b>Sensory Play - drop in</b> <b>Sensory room time</b>			
Stanmore Park William Drive Stanmore HA7 4FZ 020 8736 6480 <b>Sessions are drop in unless stated otherwise</b>	10 – 11am <b>PAFT Group Birth – 3 years - drop in</b>	10 – 11.30am <b>Imagine &amp; Play - drop in</b>		Health	
	1 – 2pm <b>Learning Through Play - drop in</b>	1 – 2pm <b>Stories Come Alive - drop in</b>			
The Pinner Centre Chapel Lane Car Park Pinner HA5 1AA 020 8424 1460 <b>Sessions are drop in unless stated otherwise</b>	10 – 11am <b>Walk &amp; Talk in the Park - drop in</b> <b>Pinner Memorial Park</b>	10 – 11am <b>TALK &amp; Play - drop in</b> <b>18 months +</b>	Health		
	PM <b>Behaviour 3 – 9 years workshop</b> <b>Call to book</b>	10 – 11.30am <b>Virtual transition in to school advice sessions – Call to book</b>			
		1.30 – 2.30pm <b>PAFT Group Birth – 3 years - drop in</b>			
Whitefriars Children’s Centre Whitefriars Avenue HA3 5RQ 020 8424 1066 <b>Sessions are drop in unless stated otherwise</b>	10 – 11am <b>PAFT Baby Group- drop in</b> <b>Crawlers – 18 months</b>	9.30 – 11.30am <b>Childminders' Group</b>	Health	Health	Health
	1.30 – 2.30pm <b>Stories Come Alive - drop in</b>	1.30 – 2.30pm <b>Learning Through Play- drop in</b>			
Chandos Chandos Crescent HA8 6HL 020 8736 6550 <b>Sessions are drop in unless stated otherwise</b>	10 – 11am <b>TALK &amp; Play - drop in</b> <b>18 months +</b>	10 – 11am <b>Stories Come Alive - drop in</b> <b>12 months +</b>			Health
	<b>Afternoon – face to face - 1:1 parenting advice session – please book your space</b>	1 – 2pm <b>Health &amp; wellbeing stay &amp; play - drop in</b>			

	Monday 18 July	Tuesday 19 July	Wednesday 20 July	Thursday 21 July	Friday 22 July
<b>Hillview</b> 2 Grange Road, South Harrow, HA2 0LW 020 8422 4692	10 - 11.30am <b>Portage Group</b> (Bookings)		10- 11am <b>Baby stay and play</b> (Birth – crawlers) Drop in	10 - 11am <b>Learning Through Play</b> (18months - 4 years) Drop in	<b>Team planning day</b>
	1-4 <b>Health Visitor</b> <b>Appointments</b>	1-2pm <b>Fun with Phonics</b> (2-4years) Drop in	1-2 pm <b>Busy Feet</b> (2-4 years) Drop in	1 - 2.30pm <b>Portage Appointments</b> (Bookings)	<b>Partner service</b>
<b>Kenmore Park</b> Warneford Road, Kenton, HA3 9HZ 020 8416 8400	10 - 11am <b>Learning Through play</b> (birth- 4 years) Drop in	9.15 - 11.15am <b>Healthy Child Clinic</b>	10-11am <b>Talk and play</b> (2-4 years) bookings	9- 3.30pm <b>Breastfeeding peer support</b> (bookings)	9.15am - 3.30pm <b>Healthy Child Clinic</b>
	1-2pm <b>Stories come Alive</b> (birth-4 years) Drop in	1 - 4pm <b>Health Visiting</b> <b>Appointments</b>	1 - 2pm <b>Baby Stay &amp; Play</b> (Birth - 18months) Drop in	<b>Post Natal Support Group</b> <b>By Appointment</b>	
<b>Elmgrove</b> Kenmore Ave, Kenton, HA3 8LU 020 8907 4941		DV Community Group	10-11am <b>Stories Come Alive</b> (birth-4 years) Drop in	10-11am <b>Fun with Phonics</b> (2-4 years) Drop in	
			1-2pm <b>Baby stay and play</b> (birth -crawlers) Drop in	1 - 2pm <b>Explore and learn outdoors</b> (birth-4 years) Drop in	
<b>Gange</b> 68 Canning Road, Wealdstone, HA3 7SN 020 8427 0134	<b>Partner service</b>	10-11.15am <b>Little cooks</b> ( 2 - 4 years) bookings	10-11am <b>Health and wellbeing</b> (birth- 4years) Drop in	10-11am <b>Explore and learn outdoors</b> (birth-4 years) Drop in	<b>Partner service</b>
	1.30 - 2.30pm <b>Sensory Baby</b> (birth - crawlers) Drop in			1-3 pm <b>Parenting Top Tips</b> <b>Call to book a place</b>	<b>Partner service</b>

Centres in the Cedars Hub	Address and contact details	Centres in the Hillview Hub	Address and contact details
Cedars Hub Children's Centre	Whittlesea Road, Harrow, HA3 6LS. 020 8736 6222 8am – 6pm	Hillview Hub Children's Centre	2 Grange Road, South Harrow, HA2 0LW. 020 8422 4692
The Pinner Centre	Chapel Lane Car Park, Pinner HA5 1AA 020 8424 1460	Kenmore Park Delivery Site	Warneford Road, Kenton, HA3 9HZ. 020 8416 8400
Whitefriars Delivery Site	Whitefriars Avenue, Harrow, HA3 5RQ. 020 8424 1066	Gange Delivery Site	68 Canning Road, Wealdstone, HA3 7SN. 020 8427 0134
Chandos Delivery Site	Chandos Crescent, Edgware, HA8 6HL. 020 8736 6550	Elmgrove Delivery Site	Kenmore Avenue, Kenton, HA3 8LU. 020 8907 4941
Stanmore Park Delivery Site	William Drive, Stanmore, HA7 4FZ. 020 8736 6480	Wealdstone Youth Hub The Wealdstone Youth Centre, 38 – 42 High Street, Wealdstone, HA3 7AE 020 8416 8667	

Please remember, all our timetables can be found in the photo sections on Facebook:



[www.facebook.com/harrowcc](https://www.facebook.com/harrowcc)



## Safeguarding is EVERYONE'S RESPONSIBILITY

If you are concerned about a child call **020 8901 2690** on weekends or after 5pm call **020 8424 0999**

Domestic Abuse Support and Advice

If you are feeling unsafe or are experiencing domestic violence you can seek support by calling the Golden Number **020 8901 2690** or the DA helpline on **020 8907 8148**  
24 hrs **0808 2000 247**  
Stay safe!